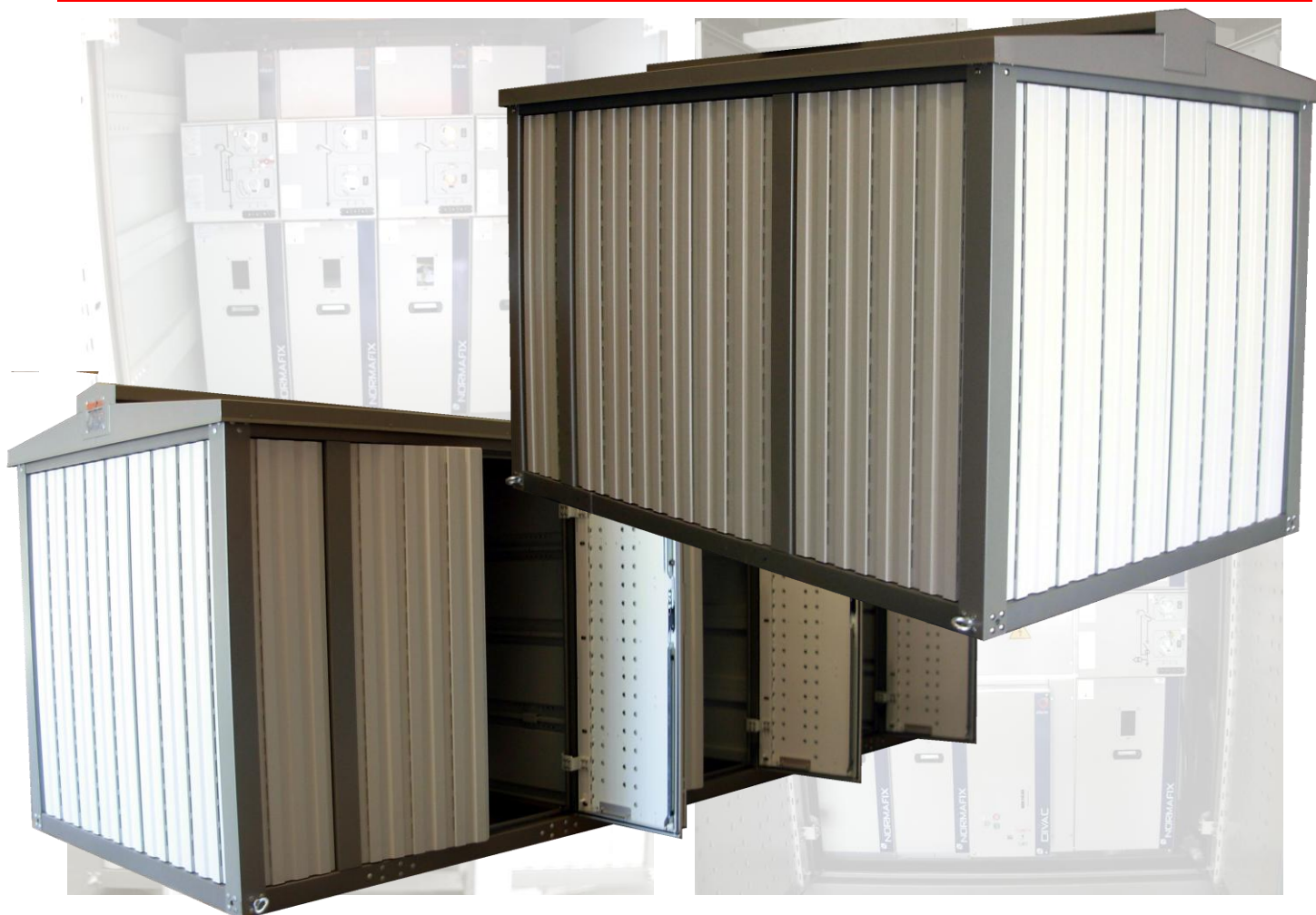


Stainless Steel and Aluminium Substation Cabinet



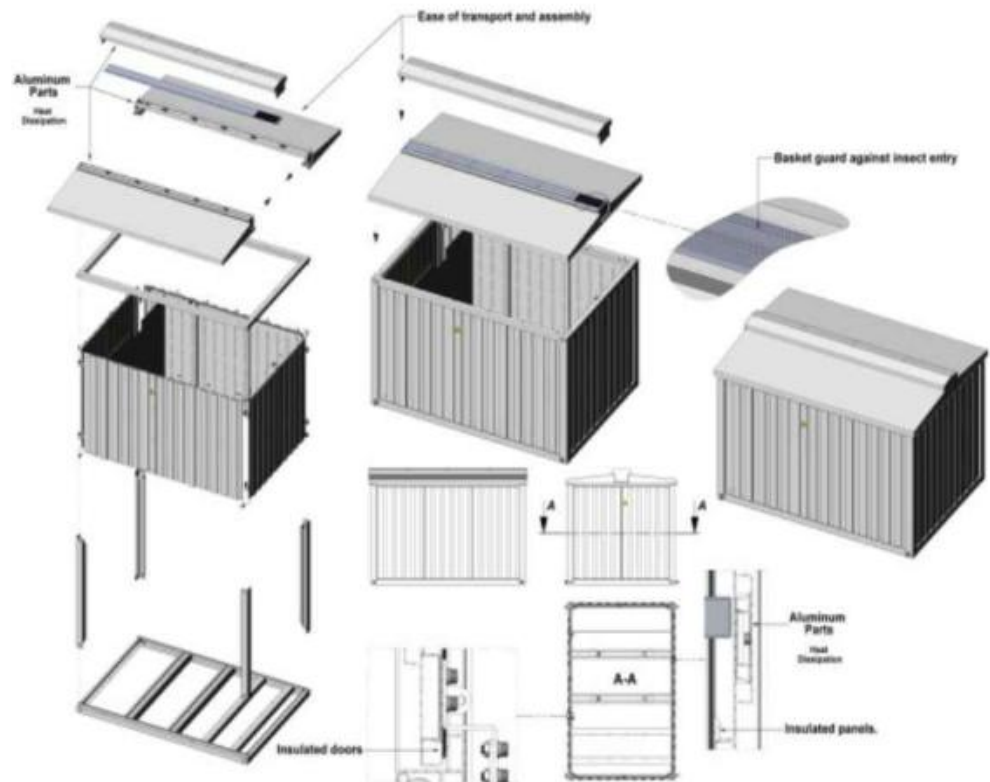
- Supplied in Kit (disassembled);
- Manufactured in stainless steel and aluminium;
- Electrostatic polyester powder paint in the colour RAL 7035 on panels and RAL 9007 on the pillars and ceiling;
- Ceiling and microperforated grids in aluminium for better heat dissipation;
- Doors insulated with polyurethane seals;
- Panels insulated with double walls and seals of polyurethane;
- Tested in factory;
- Easy integration in rural and urban areas;
- Flexibility in the internal space in order to receive various types of equipment;
- Easy transportation, storage and assembly;

- Supplied with assembly instructions;
- Reduced implantation area;
- Reduced maintenance;
- Special anti-condensation ventilation system, using special microperforated grids;
- Tropicalised;
- Ventilation protected with microperforated grids preventing the entry of insects or reptiles while maintaining a high level of ventilation;
- Degree of protection (IEC 60529 and EN 50102): IP 45 (some care in building the concrete foundation is required and the related tightening of the substation to not compromise the level of protection).

Stainless Steel and Aluminium Substation Cabinet

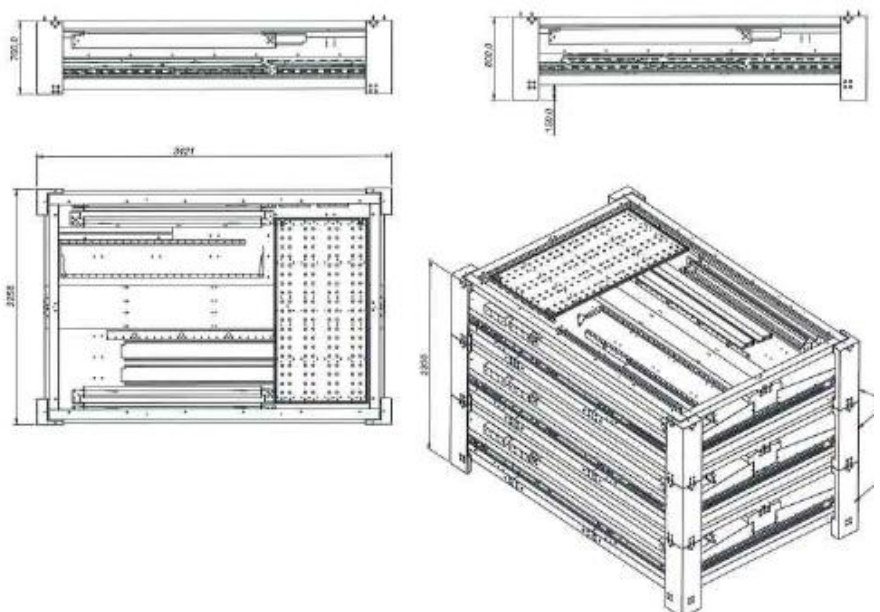
The stainless steel substation supplied in kit form, occupy less volume and it is possible to stack more than one, which leads to a considerable gain in transportation costs, for example a 40 'Open Top shipping container carries 1 mounted substation and 3 more disassembled substations and the corresponding equipment (example for IBERKIT 24T1C5).

Exploded View



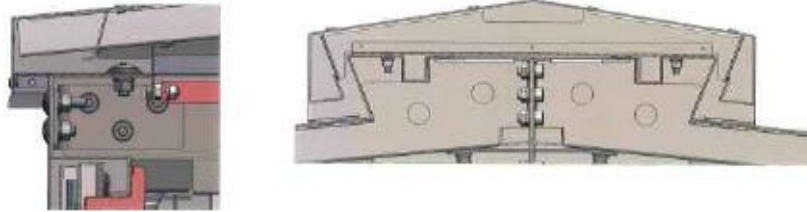
KIT Supplied

With a disposable structure
(this structure carries no cost to the customer)



Stainless Steel and Aluminium Substation Cabinet

Aluminium ceiling detail



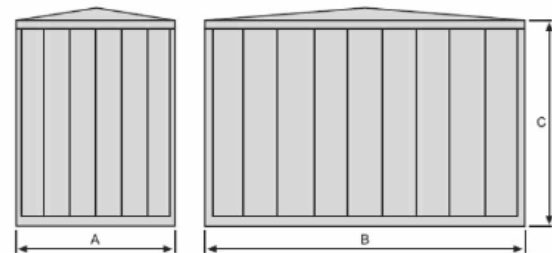
We commercialize a wide range of substation models, of which we highlighted the followings:

Voltage (kV)	Reference	Width (A - mm)	Length (B - mm)	Height (C - mm)
24	IBERKIT 24T1C5	2150	3200	2220
24	IBERKIT 24T2C4	2150	5830	2220
36	IBERKIT 36T1C3-EF	2150	3770	2500
36	IBERKIT 36T1C6-L-EF	2150	6150	2500

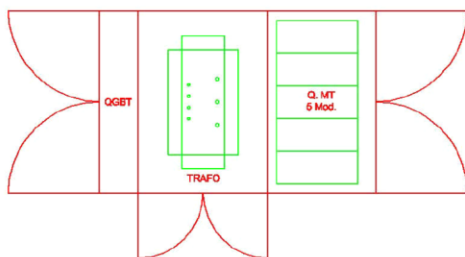
Example of the reference composition:

Model IBERKIT 24T1C5:

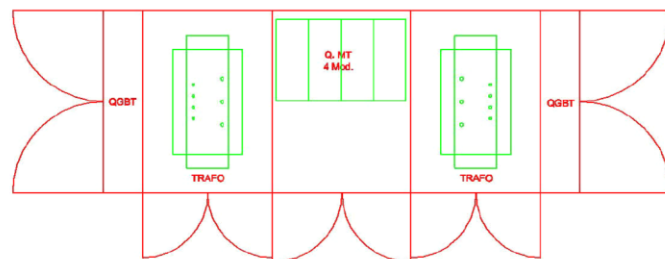
- Substation up to 24 kV;
- 1 Transformer up to 1250 kVA;
- Space up to 5 modules of main medium voltage board (24 kV=375 mm length / 36 kV=600mm length).



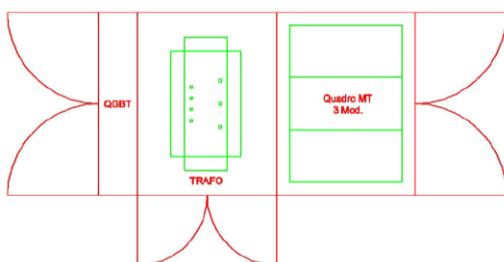
IBERKIT 24T1C5



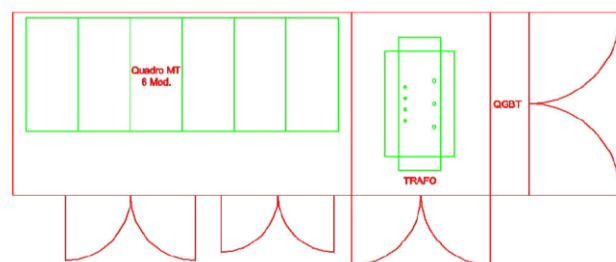
IBERKIT 24T2C4



IBERKIT 36T1C3-EF

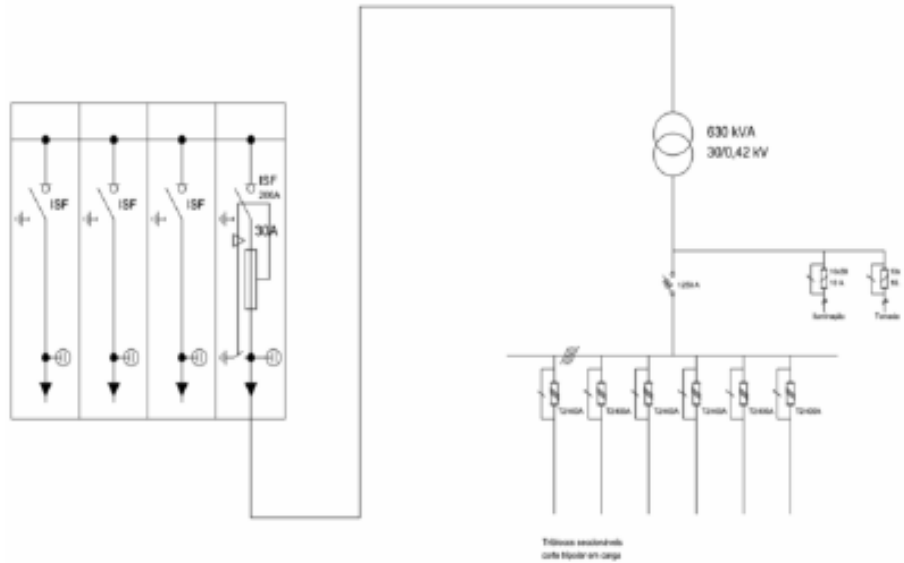


IBERKIT 36T1C6-L-EF

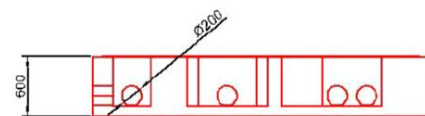
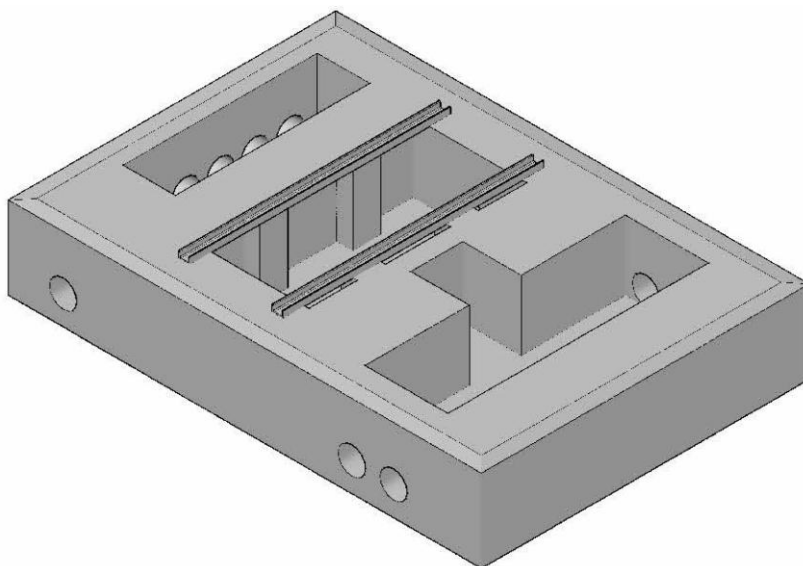


Stainless Steel and Aluminium Substation Cabinet

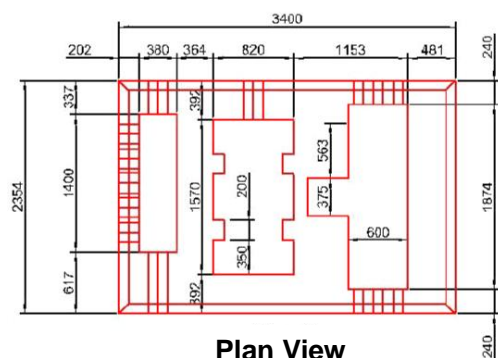
Schematic diagram example



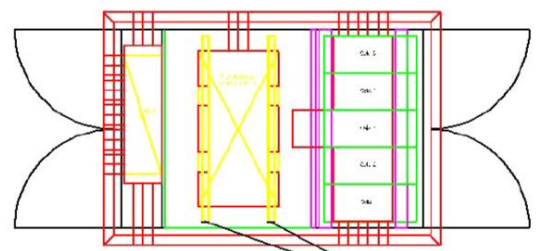
Concrete foundation for IBERKIT 24T1C5



Frontal View



Plan View



Note: Dimensions may be changed without notice